

MANY BRANCHES, ONE VINE

CHARISM ART EXHIBITION

A celebration of the charismatic journey of
Catholic schools in Western Australia.

EXHIBITION

Monday 20th – Thursday 23rd
October

GALLERY

Chisholm Catholic
College Chapel

ENTRIES

Open Monday 4th August
Close Friday 5th September

Further information at
www.spiritofthearts.com.au

I am the vine;
you are the branches

~ John 15:5 ~



CATHOLIC
EDUCATION
WESTERN AUSTRALIA

JUBILEE 2025



MANY BRANCHES, ONE VINE

CHARISM

ART EXHIBITION

HANDY REFERENCE LIST

DELIVERY OF ARTWORKS

All artwork must be delivered to the
Catholic Arts Office,
St Catherine's Centre,
31 Williamstown Road, Doubleview
Monday 13 – Wednesday 15 October 2025
Office hours are strictly 8am-4pm.

ONLINE ENTRIES

Opening date Monday 4 August 2025
Closing date Friday 5 September 2025
(Log in information to submit entries will be
supplied in due course)

NUMBER OF ARTWORKS

Primary – Years Kindy to 2
Maximum 1 individual entry per school
Primary – Years 3 to 6
Maximum 1 individual entry per school

Secondary – Years 7 to 10
Maximum 1 individual entry per school
Secondary – Years 11 and 12
Maximum 1 individual entry per school

COLLECTION OF ARTWORKS

Artworks are to be collected from the
Catholic Art Office between
Monday 27 – Wednesday 29 October from
8am – 4pm



A celebration of the charismatic journey of
Catholic schools in Western Australia.

GUIDELINES

Online submission of entry

- Entries are to be submitted online with a photo uploaded. Please ensure all details are correct as whatever is entered online will be used in the production of the catalogue.
- Students are encouraged to title their artwork as this enhances the viewer's understanding of, and interest in, the work. It is suggested not to name multiple entries with the same title.
- Artist statement is limited to 250 characters (inclusive of spaces).
- Ensure that the artist statements reflect the school's representation of charism.
- Students must be aware that the online entry provides authorisation for the reproduction of artwork images in publications and on the Catholic Arts/Catholic Education WA websites. Please advise the Catholic Arts Office if you do **not** consent to this.
- Closing date for online entries is **Friday 5 September 2025**

Delivery of Artwork

- All art must be delivered to the Catholic Arts Office, St Catherine's Centre, 31 Williamstown Road, Doubleview from **Monday Oct 13 to Wednesday 15 Oct between 8am – 4pm**. (A location map is attached). Artwork is **not** to be delivered to the Newman Siena reception.
- * Labels A & B must be attached to artwork and Label C submitted on delivery to the Catholic Arts Office.
- * No more than TWO (2) pieces of artwork (Primary) per school and TWO (2) pieces of artwork (Secondary) per school
- * Artwork must be packaged carefully and securely for transportation. **Fragile artwork must be securely packed (in a box) with an accompanying photograph on how it is to be displayed. The art teacher must take responsibility for the hanging of fragile pieces (or pieces that are difficult to display) on set-up day, Friday 17 October between 8am – 1pm at Chisholm College.**
- * A photograph of each piece of artwork, in the way it is to be displayed, is to be attached to the artwork.
- * Label C must be completed and authorised with the signature of the Principal.

Presentation of Artwork

- Refer to SCSA Submission Dimensions information attached. Prior approval from the Angelico Committee must be granted for submissions outside of these guidelines.
- Paintings on stretch canvas must be of exhibition standard i.e., painted canvas edges.

- A mannequin to exhibition standard must be supplied for displaying textiles and jewellery.
- Artwork to be securely fixed to stop movement.
- All work submitted must be the student's own artwork.
- Artwork labels will be created by Catholic Arts displaying student names, year level, school and artist statement. Please do not write student's name on the artwork or glue a name label on the front of the artwork.
- **Electrical tagging is compulsory for any artworks that require a power source i.e. cords/power boards etc. Please ensure the electrical tag is clearly visible on all equipment. If the artwork is not tagged it will not be exhibited. This is a venue requirement.**

2D Artworks are to be **mounted on card or core board**. Mounts should have **at least a 6cm frame** and mount board can be any colour. Pre-cut frames may be used. Frames are preferable but are not compulsory.



Artwork includes a 6cm frame. A 'store bought' frame may also be used



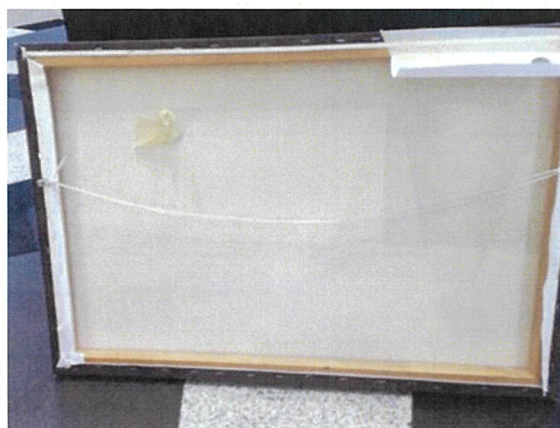
Artwork not framed

Name is not to be written or glued on front of the artwork

Hanging of Artwork

- Please be aware that artworks will be displayed on Panel boards and plinths. There is no facility to hang pieces from the ceiling.
- 2D Artworks are to be **mounted on card or core board and have adequate Velcro attached, covering the length of each side**. Framed artworks must have hanging devices and not use Velcro.
- Artwork hanging devices must be adequately wired and securely **attached with screws, not tape or glue. Do not use fishing line and masking tape.**
- Hanging devices on 'purchased frames' must be reinforced. Ensure that glass is firmly fixed within the frame.
- Artworks without appropriate hanging devices will not be exhibited.

Please use the attached images as a guide



The Committee has the right to exclude a piece of work if not presented to exhibition standard.

Suitability of Artwork

It is the responsibility of Principals to sight the artworks prior to submission. Provision for the Principal and Art Teacher to 'sign off' on the artwork has been made on Label C (Registration Label) which must be submitted with each entry.

If there are any unusual artworks that require specialised display considerations, these must be identified with an accompanying photograph. If you are unsure, please forward a photograph to the Committee for viewing prior to submitting online.

In-class worksheets and Black-Line Masters will not be accepted for display in the exhibition.

The Committee reserves the right to advise schools if a particular piece of work is deemed unsuitable for exhibition and no further correspondence will be entered into.

Judging

Award recipients will be notified via the school Principal.

Visiting the Exhibition

The exhibition will be open to schools from Monday 20th – Thursday 23rd October. Times to be advised.

A 3D virtual tour will be available on the Catholic Arts website at the completion of the exhibition.

Setting up

All due care is taken when setting up the exhibition, however the committee cannot take responsibility once the exhibition commences. Chisholm Catholic College chapel is a secure venue and will endeavour to ensure the artwork is safe.

Collection of artworks

Artworks are to be collected from the Catholic Arts Office from Mon 27 Oct – Wed 29 Oct between 8am – 4pm.

Ample notice is being given to ensure planning for collection of the artworks is organised by the school.



IDENTIFICATION OF ARTWORKS

Art Identification Labels **A, B and C** must be submitted with each entry when delivered. Ensure the image appears on the label.

- ☐ Labels **A and B** to be attached to each piece of artwork. (front and back)
Do not glue or staple the label to the front of the artwork. Sticky tape (that will not damage the artwork when removed) or a paper clip is recommended.

- ☐ Label **C** (Registration Label) will be collected by staff when artworks are delivered to:

Catholic Arts Office
St Catherine's Centre
31 Williamstown Road
Doubleview WA 6018

Artworks are not to be delivered to the Newman Siena Centre reception.

Delivery dates are:

Monday 13 – Wednesday 15 October

Office hours are strictly 8am – 4pm.

- ☐ Please ensure that at the point of selection, all artwork submitted is supportive of Catholic values. It is the responsibility of the Principal to sight artworks prior to submission. Provision for the Principal to '**sign off**' on artworks has been made on Label **C** (Registration Label).



AWARDS CATEGORIES & PRIZES

PRIMARY – 2 submissions per school

<u>YEAR</u>	<u>AWARD</u>	<u>PRIZE</u>	<u>CATEGORY</u>
Years Kindy – 2	Award recipient	Art Pack	2-D Artwork
Years Kindy – 2	Honourable Mention	Certificate	2-D Artwork
Years Kindy – 2	Award recipient	Art Pack	3-D Artwork
Years Kindy – 2	Honourable Mention	Certificate	3-D Artwork
Years 3 – 6	Award recipient	Art Pack	2-D Artwork
Years 3 – 6	Honourable Mention	Certificate	2-D Artwork
Years 3 – 6	Award recipient	Art Pack	3-D Artwork
Years 3 – 6	Honourable Mention	Certificate	3-D Artwork

SECONDARY – 2 submissions per school

<u>YEAR</u>	<u>AWARD</u>	<u>PRIZE</u>	<u>CATEGORY</u>
Years 7 - 9	Award recipient	Art Pack	2-D Artwork
Years 7 - 9	Honourable Mention	Certificate	2-D Artwork
Years 7 - 9	Award recipient	Art Pack	3-D Artwork
Years 7 - 9	Honourable Mention	Certificate	3-D Artwork
Years 10 - 12	Award recipient	Art Pack	2-D Artwork
Years 10 - 12	Honourable Mention	Certificate	2-D Artwork
Years 10 - 12	Award recipient	Art Pack	3-D Artwork
Years 10 - 12	Honourable Mention	Certificate	3-D Artwork

All entrants in the Charismatic Exhibition will receive a Certificate of Merit