



PRIMARY ANGELICO EXHIBITION 2024 Guidelines

Online submission of entry

- Entries are to be submitted online with a photo uploaded. Please ensure all details are correct as whatever is entered online will be used in the production of the catalogue.
- Students are encouraged to title their artwork as this enhances the viewer's understanding of, and interest in, the work. It is suggested not to name multiple entries with the same title.
- Artist statement is limited to 100 characters (inclusive of spaces).
- Works nominated for Fra Angelico Award, the Indigenous Art Award, **the Phil Somers Sculpture Award and/or the Catholic Earthcare Australia Award** will automatically be entered into the General Category. Students must tick the nomination box on the Online Entry to have their work judged for the respective award. Ensure that the artist statements for the nominated artwork/s reflect the award criteria (See flyer's).
- Schools are encouraged to submit entries from a variety of year levels.
- **Students must be aware that the online entry provides authorisation for the reproduction of artwork images in publications and on the Catholic Arts/Catholic Education WA websites. Please advise the Catholic Arts Office if you do **not** consent to this.**
- Closing date for online entries is **Friday 28 June 2024**

Delivery of Artwork (Metropolitan Schools)

- All art must be submitted to the Catholic Arts Office, St Catherine's Centre, 31 Williamstown Road, Doubleview from **Monday July 22 to Wednesday July 24 between 8am – 4pm**. (A location map is attached). Artwork is **not** to be delivered to the Newman Siena reception.
- * General category labels A & B must be attached to artwork and Label C submitted on delivery to the Catholic Arts Office.
- * No more than EIGHT (8) pieces of artwork per school can be submitted, this is inclusive of ONE (1) Group submission per school.
- * Artwork must be packaged carefully and securely for transportation. **Fragile artwork must be securely packed (in a box) with an accompanying photograph on how it is to be displayed. The art teacher must take responsibility for the hanging of fragile pieces (or pieces that are difficult to display) on set-up day, Saturday 3 August from 9am at Forrest Centre.**
- * A photograph of each piece of artwork, in the way it is to be displayed, is to be attached to the artwork.
- * The General Category Label C must be completed and authorised with the signature of the Principal.

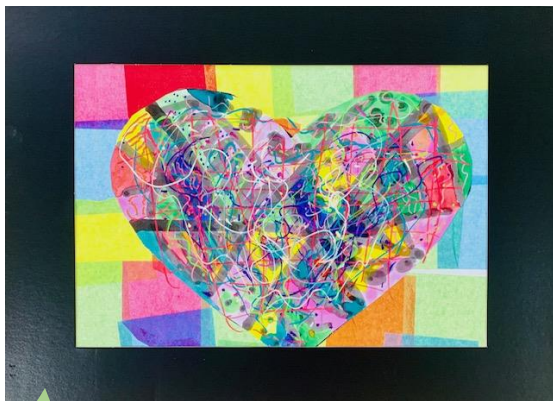
Delivery of Artwork (ADDITIONAL NOTE FOR REGIONAL SCHOOLS)

- Regional schools, who engage an external transport company for delivery, are to submit artworks by **Friday 19 July**. Transport costs are the responsibility of the school.
- An email is to be sent to the Catholic Arts office once the artworks have been collected from the school, confirming collection date and number of packages expected for delivery.
- It is the responsibility for schools to track their delivery.
- The Catholic Arts Office will confirm delivery and number of items received via email.
- Instruct the transport company that delivery must be made to the Catholic Arts Office and **not** the Newman Siena Centre reception.
- * (see above for additional delivery guidelines)

Presentation of Artwork

- Refer to SCASA Submission Dimensions information attached. Prior approval from the Angelico Committee must be granted for submissions outside of these guidelines.
- Paintings on stretch canvas must be of exhibition standard i.e., painted canvas edges.
- A mannequin to exhibition standard must be supplied for displaying textiles and jewellery.
- Artwork to be securely fixed to stop movement.
- All work submitted must be the student's own artwork.
- Artwork labels will be created by Catholic Arts displaying student names, year level, school and artist statement. Please do not write student's name on the artwork or glue a name label on the front of the artwork.
- **Electrical tagging is compulsory for any artworks that require a power source i.e., cords/power boards/digital displays/laptops etc. Please ensure the electrical tag is clearly visible on all equipment. If the artwork is not tagged it will not be exhibited. This is a venue requirement.**

2D Artworks are to be **mounted on card or core board**. Mounts should have **at least a 6cm frame** and mount board can be any colour. Pre-cut frames may be used. Frames are preferable but are not compulsory.



Artwork includes a 6cm frame. A 'store bought' frame may also be used

•



Name is not to be written or glued on front of the artwork

Artwork not framed

Hanging of Artwork

- Please be aware that artworks will be displayed on Panel boards and plinths. There is no facility to hang pieces from the ceiling.
- 2D Artworks are to be **mounted on card or core board and have adequate Velcro attached, covering the length of each side**. Framed artworks must have hanging devices and not use Velcro.
- Artwork hanging devices must be adequately wired and securely **attached with screws, not tape or glue**. **Do not use fishing line and masking tape.**
- Hanging devices on 'purchased frames' must be reinforced. Ensure that glass is firmly fixed within the frame.
- Artworks without appropriate hanging devices will not be exhibited.

Please use the attached images as a guide



The Committee has the right to exclude a piece of work if not presented to exhibition standard.

Suitability of Artwork

It is the responsibility of Principals to sight the artworks prior to submission. Provision for the Principal and Art Teacher to 'sign off' on the artwork has been made on Label C (Registration Label) which must be submitted with each entry.

If there are any unusual artworks that require specialised display considerations, these must be identified with an accompanying photograph. If you are unsure, please forward a photograph to the Committee for viewing prior to submitting online.

In-class worksheets and Black-Line Masters will not be accepted for display in the exhibition.

The Committee reserves the right to advise schools if a particular piece of work is deemed unsuitable for exhibition and no further correspondence will be entered into.

Group Submissions

Group submissions are to be entered as a separate category. One (1) group submission per school is permissible. **Group submissions are not eligible to nominate for the Fra Angelico Award, Phil Somers Sculpture Award, Catholic Earthcare Australia Award or the Indigenous Art Award.**

The photo uploaded with the online entry must reflect the way in which the pieces are to be displayed. Concerns regarding the display of a group submission must be directed to the Catholic Arts Office.

Judging

Award recipients will be notified via the school Principal.

Awards Presentation Evening

Award recipients (only) from the Exhibition will be invited to attend the Awards Presentation Evening on Tuesday 13 August at 6pm. All Principals (or their representative) will receive an invitation to attend the Awards Presentation Evening.

Award winning recipients and two (2) family members will receive an invitation. In the Group Submission category, one (1) representative (to be chosen by the Principal) will be invited on stage to receive their award at the Awards Presentation Evening. RSVPs are imperative.

“Awards Presentation Night”

Students receiving Awards at the Opening Night must be in full winter school uniform

Visiting the Exhibition

Schools are encouraged to view the Exhibition at Forrest Centre during business hours (9.00am – 5.00pm) from Monday August 5 to Friday August 23.

A 3D virtual tour will be available on the Catholic Arts website at the completion of the exhibition.

Artwork Viewing Session

Due to the restricted business hours, students, families and teachers are invited to attend an exhibition viewing session on Saturday 17 August at the Forrest Centre, 221 St Georges Terrace, Perth from 1.30-3pm. Paid parking is available at the Forrest Centre Car Park (See Location Map).

Photographs

There will be an official photographer at the Awards Presentation Evening and Viewing session. Photos of the artworks, award recipients and audience will be placed on the Catholic Arts website. If you do not wish to have your photo on the website or in any publications, please advise the Catholic Arts Office via email by the close of entry date. You must also inform the photographer on the evening.

Entry Fee – Metropolitan Schools

Angelico entry fees are \$15 per individual entry and \$20 per group submission. Invoices will be issued to schools at the completion of the exhibition by Catholic Education Western Australia. Please do not send money with artworks.

Entry Fee – Regional Schools

Due to the costs incurred by regional school to transport artworks to Perth, all regional schools south of Pinjarra and north of Geraldton (inclusive) will be exempt from paying entry fees for both individual and group submissions.

Setting up

The knowledge and expertise of art teachers is invaluable in setting up the exhibition. Any assistance would be greatly appreciated on Saturday 3 August.

Please be reminded that set up of any artworks that require specialised display consideration are the responsibility of the art teacher.

All due care is taken when setting up the exhibition, however the committee will not take responsibility once the exhibition commences.

Promoting Angelico

Principals and art teachers are asked to actively promote the Exhibition within their school community. Schools are encouraged to contact their local newspaper regarding students' participation. The Angelico Poster will be available on the Catholic Arts website.

Collection of artworks

Artworks are to be collected from the Forrest Centre, Perth on Saturday 24 August between 9-11am. A fee of \$50 per artwork for transport costs will be invoiced for all artworks not collected by 11am

Ample notice is being given to ensure planning for collection of the artworks is organised by the school.